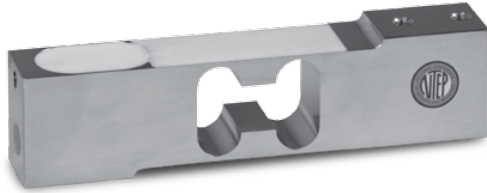
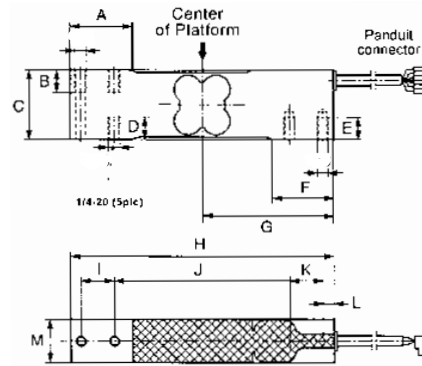


RLPWM15 Single Point, Stainless Steel, NTEP IP67, 1:5000 Class III Single Cell



Picture is a representation of actual product



SPECIFICATIONS

Full Scale Output:
2.0 mV/V

Bridge Resistance:
350 ohms, nominal

Material/Finish:
Stainless steel

Temperature:
Compensated range
14°F to 104°F/-10°C to 40°C

Safe Overload:
150% Full scale

Rated Excitation:
10V DC (15V maximum)

Total Error:
0.02% Full scale

Insulation Resistance:
1000 megohms

Seal Type:
Environmentally sealed

Cable Length:
3.1 m/10ft

Cable Diameter:
.190 PVC jacket

Cable Color Code:

- Green.....+ Excitation
- Black.....- Excitation
- Orange.....+ Sense
- Blue.....- Sense
- White.....+ Signal
- Red.....- Signal

Warranty:
Two-year limited warranty

Approvals:



DIMENSIONS

RATED CAPACITY	A	B	C	D	E	F	G	H	I	J	K	L	M
kg/mm													
10 - 150	35	13	40	13	13	35	75	150	19	100	19	6.2	25
lb/inches													
22.1 - 330.7	1.37	.51	1.57	.51	.51	1.37	2.95	5.90	.74	3.93	.74	.24	.98

ORDER INFORMATION

LOAD RATING	PART #	PRICE
10 kg (22.1 lb)	119904	Consult
15 kg (33.1 lb)	119912	Consult
20 kg (44.1 lb)	119905	Consult
30 kg (66.2 lb)	119906	Consult
50 kg (110.3 lb)	119908	Consult
75 kg (165.3 lb)	119909	Consult
100 kg (220.5 lb)	119910	Consult
150 kg (330.7 lb)	119911	Consult

INTERCHANGEABLE PRODUCTS

MANUFACTURER	MODEL	PAGE #
HBM®	PW15	250

RICE LAKE WEIGHING SYSTEMS